



PRODUCTS PRESENTS:

WHAT'S NEW



JON KREMER
Sr. Product Manager



JEFF BURGESS
Product Manager



BETHANY CARLSON
Release Coordinator and Product
Educator

WHAT'S NEW


INTRODUCE

- Cartegraph One expanded record list
- One-way sync to ArcGIS
- OAuth configuration for Portal

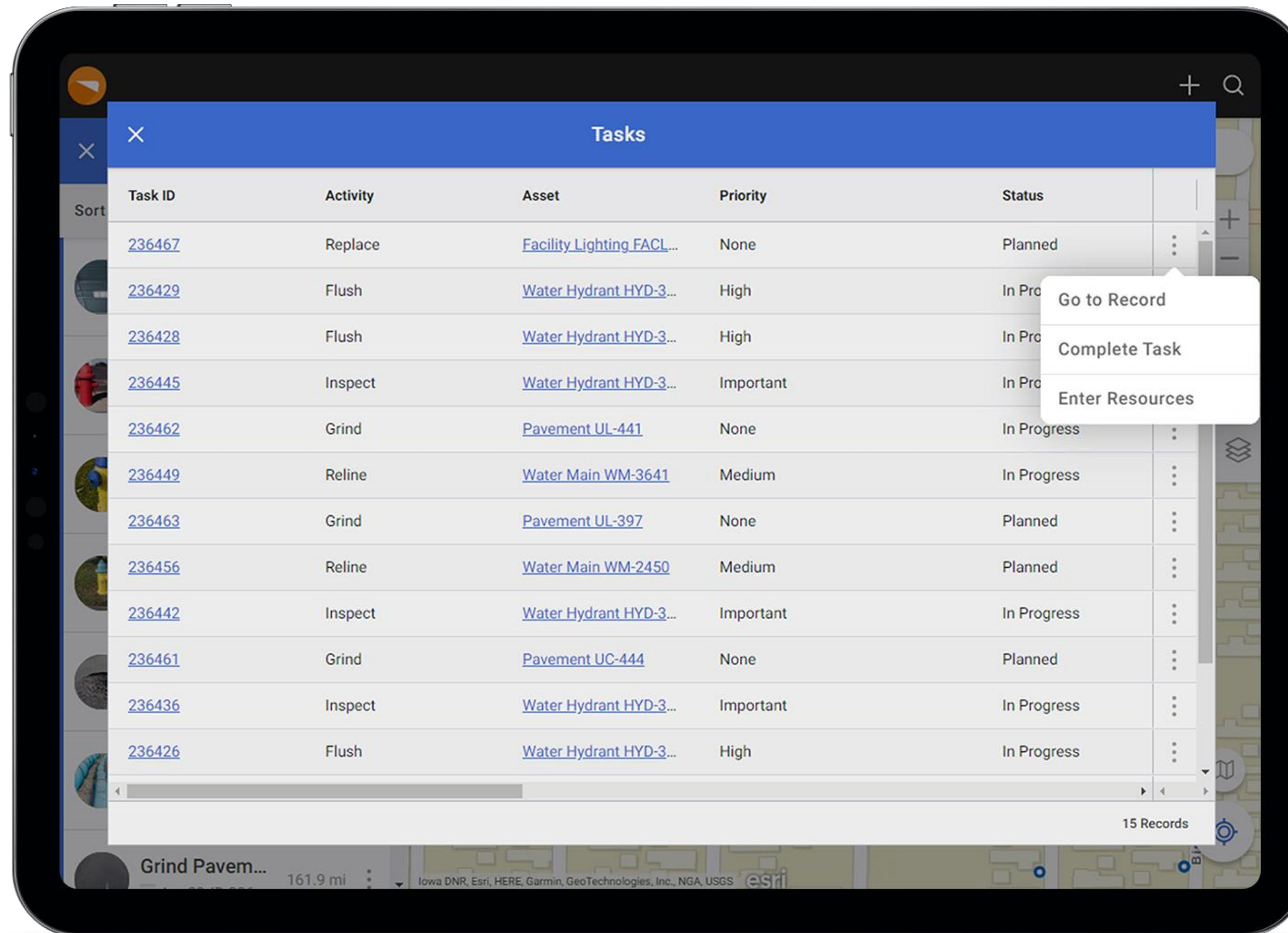
ENHANCE

- Resource entry
- Space and Property export
- Draw to Measure with text

UPDATE

- ROW Permitting
 - Release process
 - What's next
- 

EXPANDED TASK LIST IN CARTEGRAPH ONE



EXPANDED TASK LIST

Find the record you want in CarteGraph One.



- View more data about each task before opening the detail.
- Horizontal scrollbar shows you all persisted columns from CarteGraph OMS.
- Navigate to top-level records directly from the list.
- Perform actions directly from the list.



ONE-WAY SYNC TO ARCGIS

☰ Association: Facilities

Data Source

Server Name: AGOL
Feature Service: ProductsDemo
Feature Class Layer:  SDE109.SDE.Facilities
Cartegraph Recordset: Facilities
Integration Type:  One-Way from Cartegraph to GIS
Filter Text:
Inactive:

ONE-WAY SYNC TO ARCGIS

See your data your way.

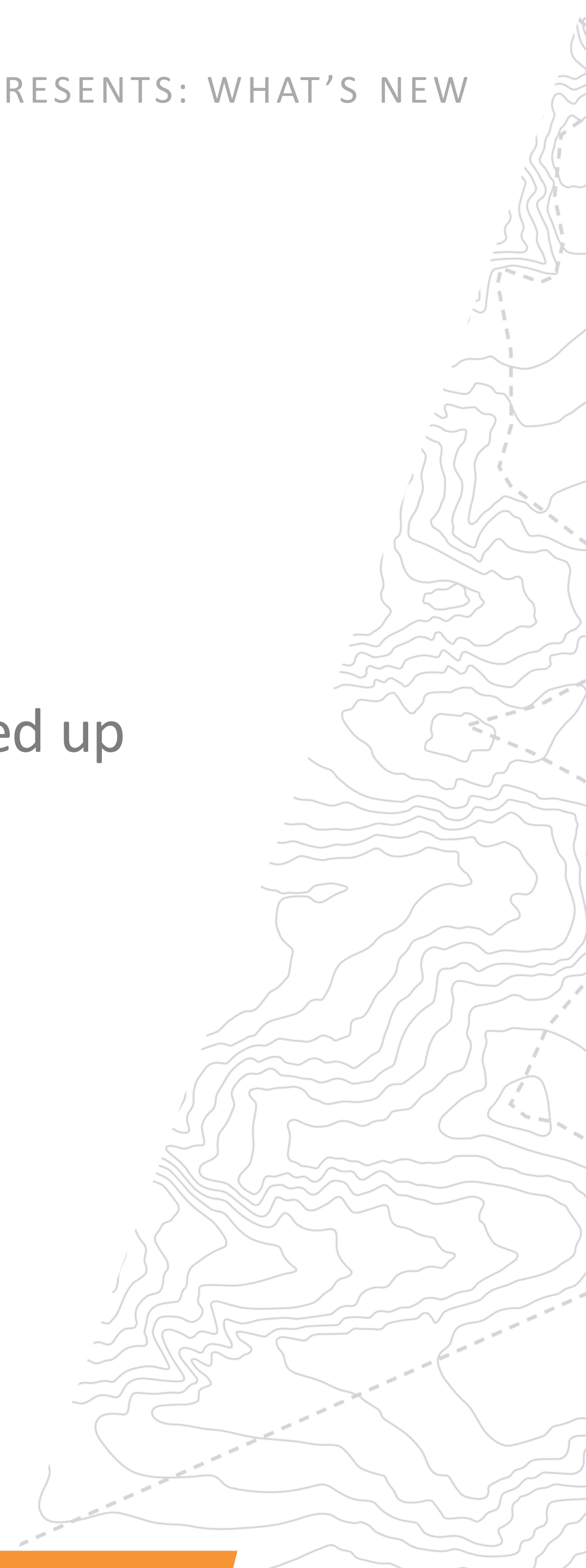
- Set up multiple one-way syncs from Cartegraph OMS to ArcGIS for any asset type.
- Seamlessly connect a GIS feature service to OMS and FMS.
- Set the Integration Type as one-way or two-way.
- Build filters for each one-way sync.
- Only one two-way type is allowed per recordset.



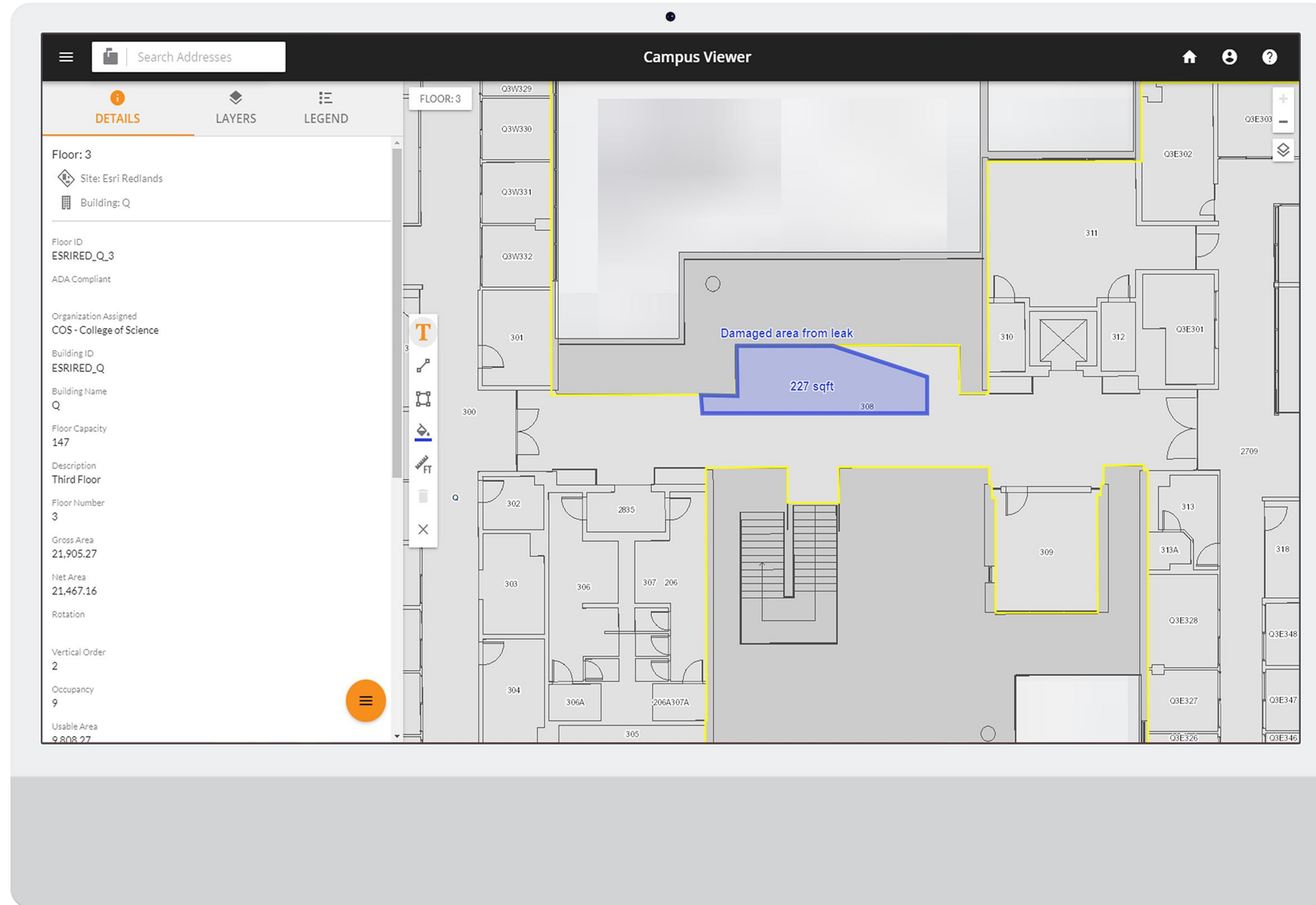
RESOURCE ENTRY UPDATES

Improve planning and data entry.

- Allow future resource entries:
 - Add labor and equipment resource entries with future dates to speed up data entry at the time of usage.
 - Support integrations with financial systems.
 - New system setting turns this on or off (off by default).
 - Works with Cartegraph One.
- Warning message displays in Distribute Resources when a potential duplicate entry is found.



FMS ENHANCEMENTS



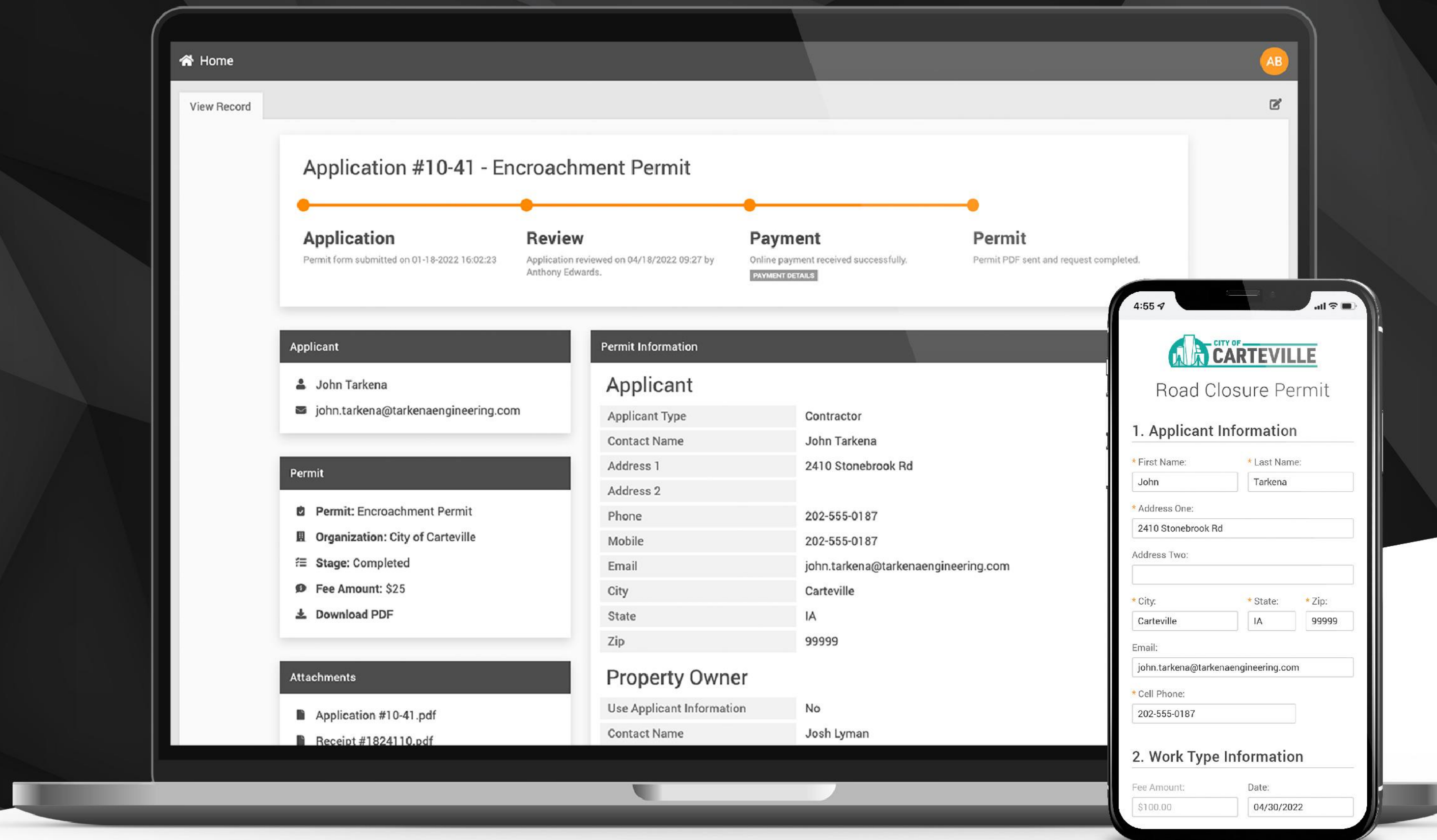
FMS ENHANCEMENTS

Based on your feedback!

- Add text with the Draw to Measure tool, right in the app.
- Control the columns that are exported to Excel from Space Manager and Property Portfolio.
- Change from SAML to OAuth when configured with ArcGIS Enterprise, and full support of Esri 10.9.1.



Cartègraph for **ROW PERMITTING**



An easier way to manage right-of-way permit applications.

CARTEGRAPH FOR ROW PERMITTING

Efficiently manage your right-of-way permit applications.

- **Simple and scalable:** paperless workflows, library of 20 standard permits, easy to configure.
- **Applications made easy:** embedded in your website, email communication, and digital approvals.
- **Central permitting hub:** standard review workflow, streamlined communications, and tracking and reporting.
- **Contactless payments:** Secure digital payments and intuitive fee calculator.
- **Variable pricing:** Multi pricing variables, optional add-ons.



SOFTWARE AND DEVICE SUPPORT

- Dropped support for SQL 2012
- Staying up to date with Esri
 - Dropped support for ArcPro 2.4.x
 - Added support for ArcPro 3 (requires a new Add-In)
 - Esri 10.5 is being dropped by Esri in December
- iOS 16 is coming in September 2022
 - Apple has released list of devices that will support version 16.
 - <https://www.apple.com/ios/ios-16-preview>



RELEASE PROCESS UPDATES

Evolving to a continual release process.

- Simplified name: see ya, season and year
- Release cadence: no more Service Packs for OMS
- Documentation: release notes and system requirements
- Sandbox sites upgraded same as production (beginning v.33)
- Quarterly webinars focused on what's new, what's next



WHAT'S NEXT?

WE ARE CURRENTLY WORKING ON...

WHAT'S NEXT...

CARTEGRAPH ONE: RECORD LISTS

- Request List Records
- Expand List functionality (Tasks)
 - Column Enhancements
 - **Sorting**
 - **Chooser**
 - **Reorder**
 - Multi-selection
 - **Distribute resources**
 - **Bulk actions**
- Additional locations to use lists
 - Layer list for Requests & Assets



WHAT'S NEXT...

MATERIAL RESERVATIONS

- Material Planning
- Asset Manager/Supervisor
 - Estimate Material & Quantity
 - Request from warehouse once finalized
- Warehouse Manager
 - Reserve Materials for Tasks
- Field Worker
 - Use Reserved Material
 - Return Unused Material



WHAT'S NEXT...

CALCULATE AND DISPLAY ASSET RISK

- Asset and Public Works Managers
 - Use risk for planning and budgeting decisions
 - Need to know which assets to work on first
- Generating calculation and supporting criteria
 - Probability of Failure (PoF)
 - Consequence of Failure (CoF)
 - Risk



WHAT'S NEXT...

ARCGIS UPDATES FOR FMS

- ArcGIS Pro publishing
- ArcGIS vector tile basemap support



WHAT'S NEW


INTRODUCE

- Cartegraph One expanded record list
- One-way sync to ArcGIS
- OAuth configuration for Portal

ENHANCE

- Resource entry
- Space and Property export
- Draw to Measure with text

UPDATE

- ROW Permitting
 - Release process
 - What's next
- 

Q + A

